

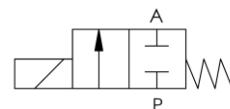
- Very small footprint and size
- Precise flow rates
- Low power consumption
- Large pressure range

TECHNICAL DATA

Function	2/2 NC
Pneumatic connection	cartridge
Electrical connection	pins
Media type	hydrogen, air, oxygen, inert gases
Media quality	≤ 10 µm
Orifice	0.3 mm
Operating pressure	0...10 bar(g)
Max. flow (air @ 10 bar(g) @ 20 °C)	7 l _s /min ± 1 l _s /min
Flow coefficient kv	up to 0.044 l/min
Flow coefficient Cv	up to 0.003 gallons/min
Temperature range, ambient	-10 °C to 60 °C
Temperature range, media	-10 °C to 60 °C
Temperature range, storage	-30 °C to 80 °C
Internal leakage @ p _{max}	< 1 ml/min
External leakage @ p _{max}	< 1 ml/min
Nominal coil resistance @ 20 °C	226 Ω
Nominal voltage	12 V
Nominal power consumption @ 20 °C	~ 0.6 W
Duty cycle (without flow)	100 %
Weight	~ 2.4 g
Mounting position	any direction
Typical Service Life	100,000,000 cycles



PNEUMATIC SYMBOL

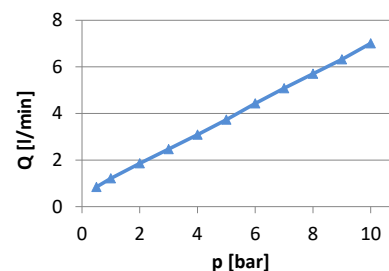


Other versions upon request

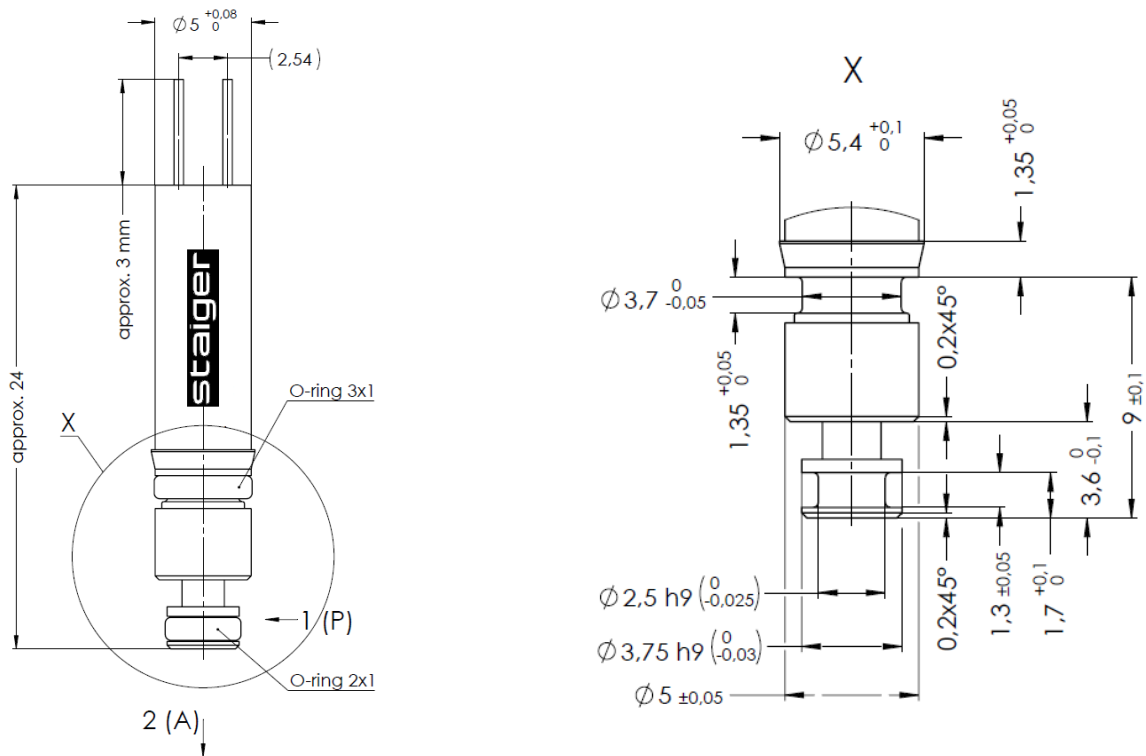
MATERIALS IN CONTACT WITH MEDIUM

Metallic materials	1.4105, 1.4305, 1.4310
Seals	FKM
Others	PTFE coating

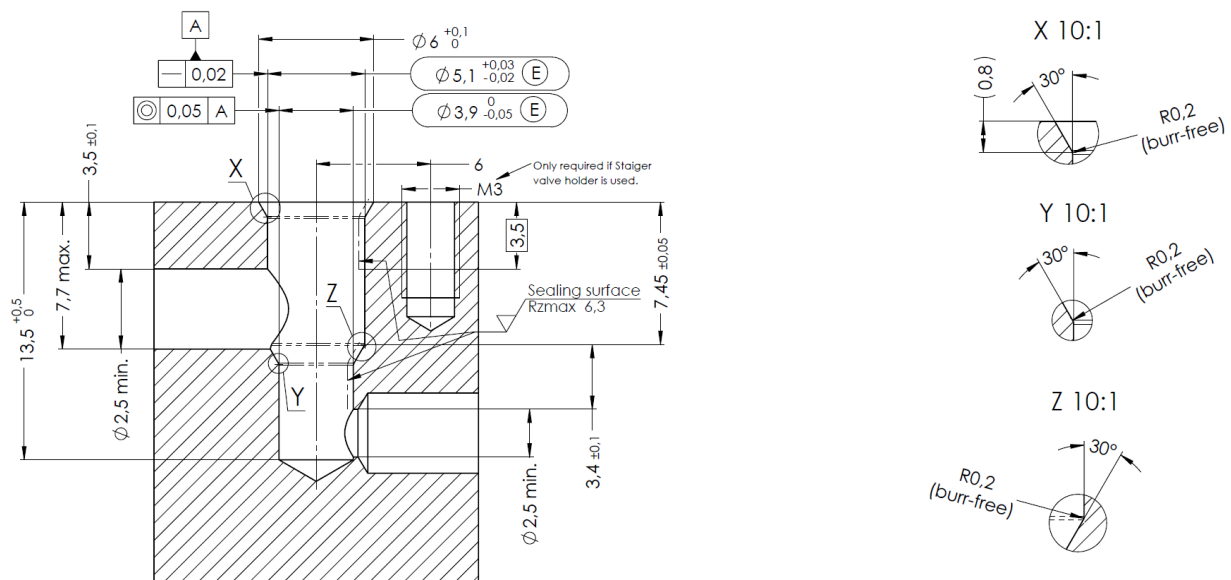
TYPICAL Q-P-DIAGRAM



VALVE DIMENSIONS



INSTALLATION GEOMETRY SUGGESTION



The maximum assembly force with which the valve may be pressed into the receptacle is 30 N. It is recommended to lubricate the valve or the O-rings during assembly (e.g. with alcohol or DI water, depending on compatibility restrictions).

The technical information given describes the normal features of our products and do not constitute a warranty declaration. All values were determined under laboratory conditions and have to be verified by the customer for its specific purpose. Through continuous technical progress, all rights to changes and modification are reserved. Status: December 2023