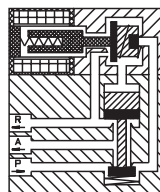


### Type SR 800

3-way manifold valves, pilot operated, with programmable control unit

**Application**  
compressed air  
and neutral gases



Type/ Order No.	Orifice [mm]	Port size	Pressure [bar]	kv-value [m³/h]	Weight [kg]	Manual override
SR 800-001	4,0	Tube O.D. 6	1,5 - 8,0	0,39	2,1	with
SR 800-002	4,0	Tube O.D. 6	1,5 - 8,0	0,39	2,1	without

Sealing material: **P** (NBR)

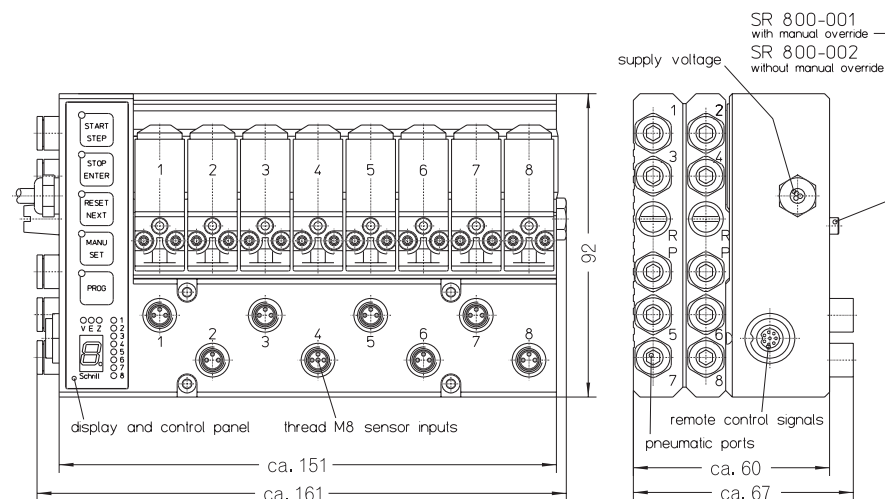
Inner parts: Stainless steel  
 Max. ambient temp.: 50 °C  
 Operating voltage: DC: 24 V, 12 V  
 Voltage tolerance: -15%... +10%

Body material: Aluminum (anodized)  
 Mounting direction: free  
 Power consumption: 1 W each valve  
 Duty cycle: 100 %  
 Degree of Protection (EN 60529): IP 54 (IP 64)

420

Other configurations upon request

The right to modification is reserved



Mounting types and accessories see page 432

421

Dimensions in mm