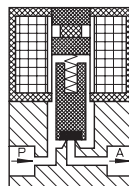
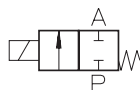


Type PI 200

2-way solenoid valve
direct actuated, bistable



Application
Neutral liquids, gases
and vapors



Type/ Order No.	Orifice [mm]	Port size	Pressure range [bar]		kv-value [m³/h]	Weight [kg]
			AC	DC		
PI 200-001	0,8	Flange	0 - 8	0,02	0,045	
PI 200-002	1,0	Flange	0 - 6	0,03	0,045	
PI 200-003	1,2	Flange	0 - 4	0,04	0,045	
PI 200-004	1,6	Flange	0 - 2	0,05	0,045	

Sealing material: **P** (NBR) **E** (EPDM) **V** (FPM)

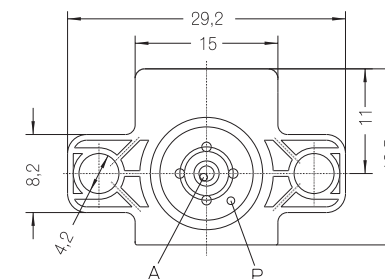
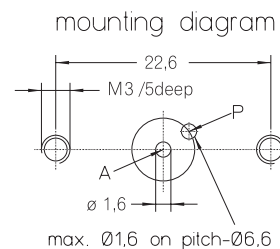
Body material: POM
 Inner parts: Stainless steel (1.4105)
 Mounting direction: Free, preferred upwards
 Max. ambient temp.: 50 °C
 Viscosity of the medium: max. 21 mm²/s (3 °E)
 Static pressure: max. 10 bar
 Standard voltage: DC: 24 V, 12 V, 9 V, 6 V

Power consumption: 2,5 W
 Pulse duration: 30 ms
 Voltage tolerance: -15%... +10%
 Operating frequency: max. 300/min
 Degree of Protection: IP 54 (EN 60529)

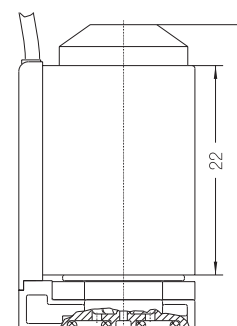
314

Other configurations upon request

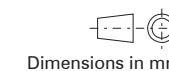
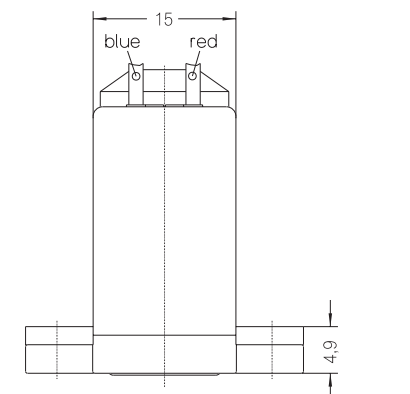
staiger



The right to modification is reserved



o-ring 2,5x1
 o-ring 5x1
 included



315