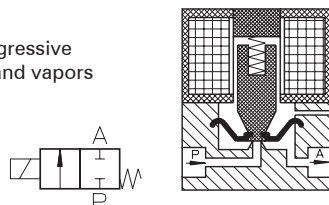


Type PE 202

2-way solenoid valve
direct actuated, NC
(normally closed), with
diaphragm separation



Application
Neutral and aggressive
liquids, gases and vapors



| Type/ Order No. | Orifice [mm] | Port size | Pressure range [bar] | | kv-value [m³/h] | Weight [kg] |
|--------------------|-----------------|-----------|----------------------|-------|--------------------|----------------|
| | | | AC | DC | | |
| PE 202-009 | 1,0 | OD 7 mm | 0 - 1 | 0 - 1 | 0,05 | 0,140 |
| PE 202-010 | 2,0 | OD 7 mm | 0 - 1 | 0 - 1 | 0,10 | 0,140 |
| PE 202-011 | 3,0 | OD 7 mm | 0 - 1 | 0 - 1 | 0,20 | 0,140 |
| PE 202-012 | 4,0 | OD 7 mm | 0 - 1 | 0 - 1 | 0,39 | 0,140 |

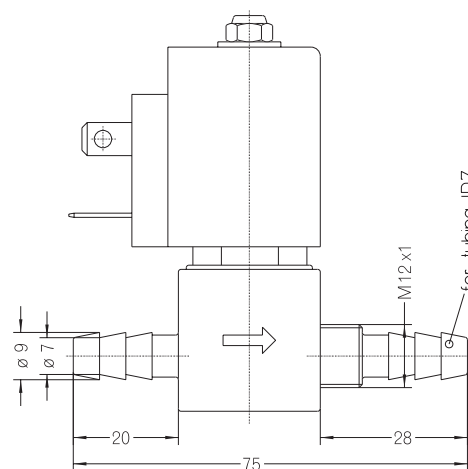
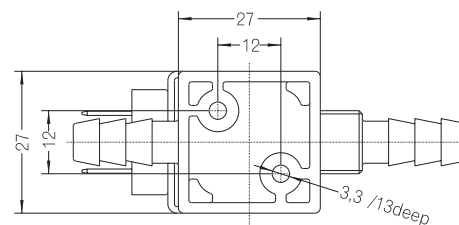
Sealing material: **P** (NBR) **E** (EPDM) **V** (FPM)

Body material: PVDF
 Inner parts: Stainless steel (1.4105)
 Mounting direction: Free, preferred upwards
 Max. ambient temp.: 50 °C
 Viscosity of the medium: max. 21 mm²/s (3 °E)
 Static pressure: max. 1 bar
 Standard voltage: DC: 24, 12 V
 AC: 230 V, 115 V, 42 V,
 24 V, 12 V (50 or 60 Hz)

Power consumption: 11 VA / 8 W
 Voltage tolerance: -15%... +10%
 Duty cycle: 100 %
 Operating frequency: max. 300/min
 Degree of Protection: IP 54 (EN 60529)

226

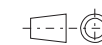
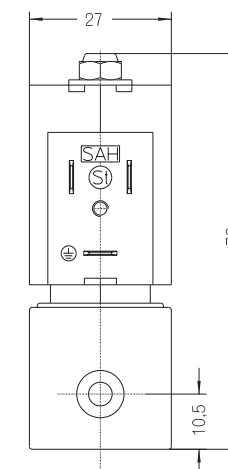
Other configurations upon request



The right to modification is reserved

227

staiger



Dimensions in mm