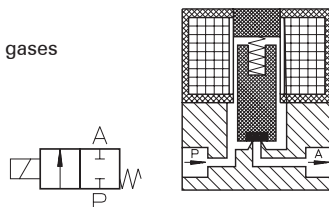


Type MA 721

2-way solenoid valve
direct actuated, NC
(normally closed)



Application
Neutral liquids, gases
and vapors



| Type/ Order No. | Orifice [mm] | Port size | Pressure range [bar] | | kv-value [m³/h] | Weight [kg] |
|--------------------|-----------------|-----------|----------------------|--------|--------------------|----------------|
| | | | AC | DC | | |
| MA 721-024 | 1,0 | G 1/8 | 0 - 20 | 0 - 12 | 0,03 | 0,520 |
| MA 721-027 | 1,6 | G 1/8 | 0 - 16 | 0 - 10 | 0,06 | 0,520 |
| MA 721-030 | 2,2 | G 1/8 | 0 - 10 | 0 - 6 | 0,11 | 0,520 |

Sealing material: **P** (NBR) **E** (EPDM) **V** (FPM)

Body material: Brass
 Inner parts: Stainless steel (1.4105)
 Mounting direction: Free, preferred upwards
 Max. ambient temp.: 50 °C
 Viscosity of the medium: max. 21 mm²/s (3 °E)
 Static pressure: max. 30 bar
 Standard voltage: DC: 24, 12 V
 AC: 230 V, 115 V, 42 V,
 24 V, 12 V (50 or 60 Hz)

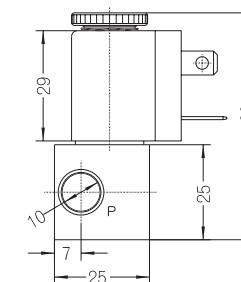
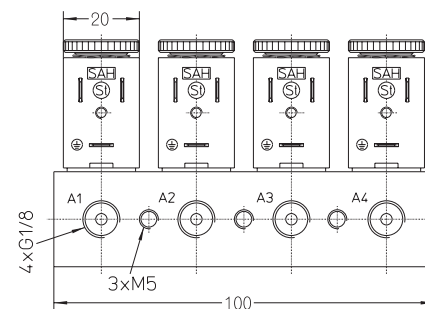
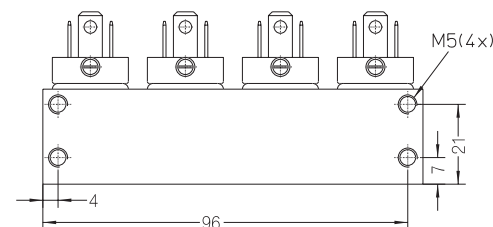
Power consumption: 5 VA / 5 W
 Voltage tolerance: -15%... +10%
 Duty cycle: 100%
 Operating frequency: max. 1000/min
 Degree of Protection: IP 54 (EN 60529)

Other configurations upon request



accessories

| | connection bush | hose nozzle | plug |
|------|--------------------|----------------|-------------|
| NBR | 530 000 550 | 530 000 551 | 530 000 552 |
| FPM | 530 000 757 | 530 000 759 | 530 000 758 |
| EPDM | 530 001 120 | 530 001 121 | 530 001 122 |



The right to modification is reserved



Dimensions in mm