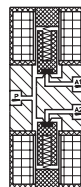
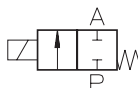


Type MA 710

2-way solenoid valve
direct actuated, NC
(normally closed)



Application
Neutral liquids, gases
and vapors



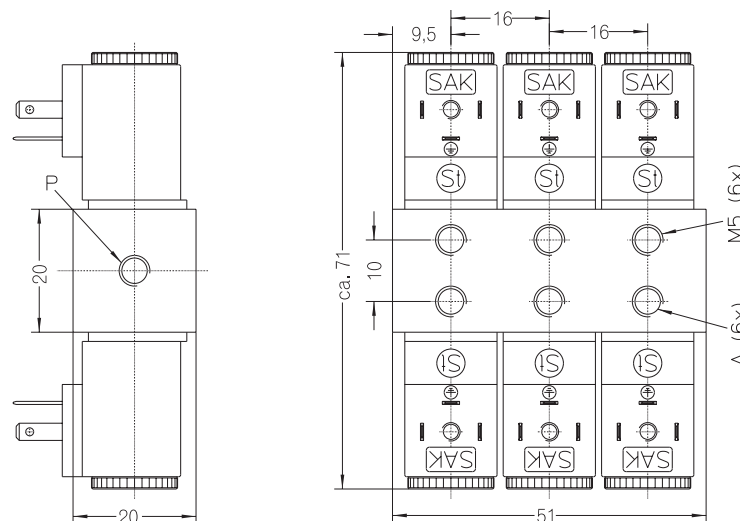
Type/ Order No.	Orifice [mm]	Port size		Pressure range [bar]		kv-value [m³/h]	Weight [kg]
		P	A	AC	DC		
MA 710-012	0,8	M 5	M5	-	0 - 8	0,02	0,300
MA 710-016	1,0	M 5	M5	-	0 - 6	0,03	0,300
MA 710-020	1,2	G1/8	M5	-	0 - 5	0,04	0,300
MA 710-024	1,6	G1/8	M5	-	0 - 2	0,06	0,300
MA 710-028	2,0	G1/8	M5	-	0 - 1	0,08	0,300

Sealing material: **P** (NBR) **E** (EPDM) **V** (FPM)

Body material: Brass/Aluminum
 Inner parts: Stainless steel (1.4105)
 Mounting direction: Free, preferred upwards
 Max. ambient temp.: 50 °C
 Viscosity of the medium: max. 21 mm²/s (3 °E)
 Static pressure: max. 10 bar
 Standard voltage: DC: 24, 12 V

Power consumption: 1 W
 Voltage tolerance: -15%... +10%
 Duty cycle: 100%
 Operating frequency: max. 1800/min
 Degree of Protection: IP 54 (EN 60529)

Other configurations upon request



The right to modification is reserved

port P	type
M5	MA 710-012
	MA 710-016
G 1/8	MA 710-020
	MA 710-024
	MA 710-028

Dimensions in mm