

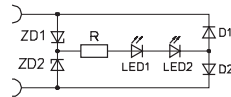
Type LD-SAW

Light emitting seal



Application

Solenoid valves with pin connectors to DIN 43650 design A



Function	Voltage VDC, VAC	Surge Protection	Solenoid valve power consumption
B	24 V	Zener diodes	max. 15 W
S	24 V, 48 V, 115 V, 230 V	Suppressor diodes	max. 50 W
R	24 V, 48 V, 115 V, 230 V	-	max. 100 W

Sealing material: Polyurethane

Operating voltage: 24, 48, 115, 230 V DC or AC
 Power consumption: see table at page 380
 Ambient temperature: -25 °C to +80 °C
 Pin configuration: free
 Degree of protection (EN 60529): IP 65 (installed)
 Display: LED green

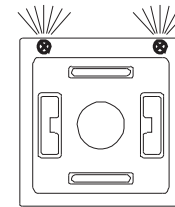
Ambient parameters: Produced without LABS ingredients, silicon free, resistant against industrial environment, EMV resistant

Order code see page 380

378

Other configurations upon request

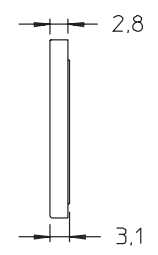
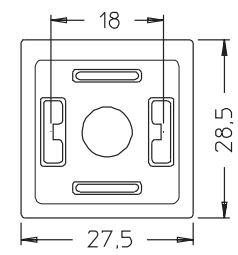
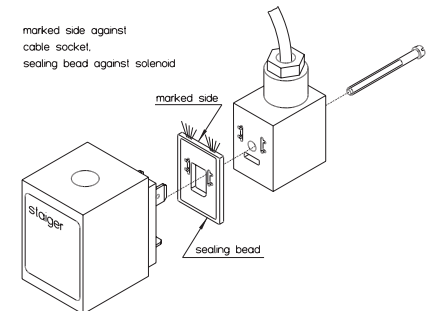
Position of LED X



lights seals protects

Installation Dimensions

The right to modification is reserved



379

Dimensions in mm