

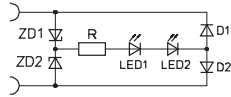
Type LD-SAB

Light emitting seal



Application

Solenoid valves with pin connectors to DIN 43650 design C



Function	Voltage VDC, VAC	Surge Protection	Solenoid valve power consumption
B	24 V	Zener diodes	max. 15 W
R	24 V, 48 V, 115 V, 230 V	-	max. 100 W

Sealing material: Polyurethane

Operating voltage: 24, 48, 115, 230 V DC or AC
 Power consumption: see table at page 380
 Ambient temperature: -25 °C to +80 °C
 Pin configuration: free
 Degree of protection (EN 60529): IP 65 (installed)
 Display: LED green

Ambient parameters: Produced without LABS ingredients, silicon free, resistant against industrial environment, EMV resistant

Order code see page 380

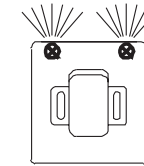
370

Other configurations upon request



Position of LED

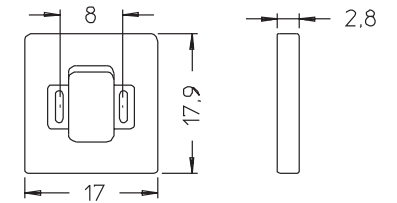
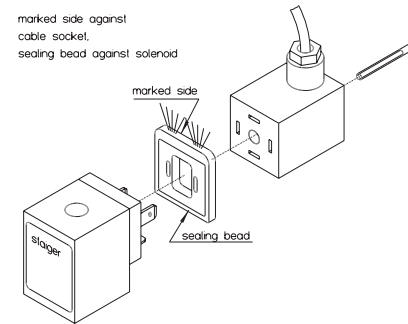
X



Installation

Dimensions

The right to modification is reserved



371

Dimensions in mm