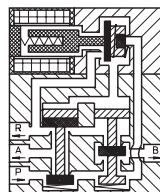


Type CR 900

4-way manifold valves, pilot operated, with parallel control unit and electrical M8-diverter

Application
compressed air
and neutral gases



Type/ Order No.	Orifice [mm]	Port size	Pressure [bar]	kv-value [m³/h]	Weight [kg]	Manual override
CR 900-001	4,0	Tube O.D. 6	1,5 - 8,0	0,39	2,0	with
CR 900-002	4,0	Tube O.D. 6	1,5 - 8,0	0,39	2,0	without

Sealing material: **P** (NBR)

Inner parts: Stainless steel
 Max. ambient temp.: 50 °C
 Operating voltage: DC: 24 V, 12 V
 Voltage tolerance: -15%... +10%

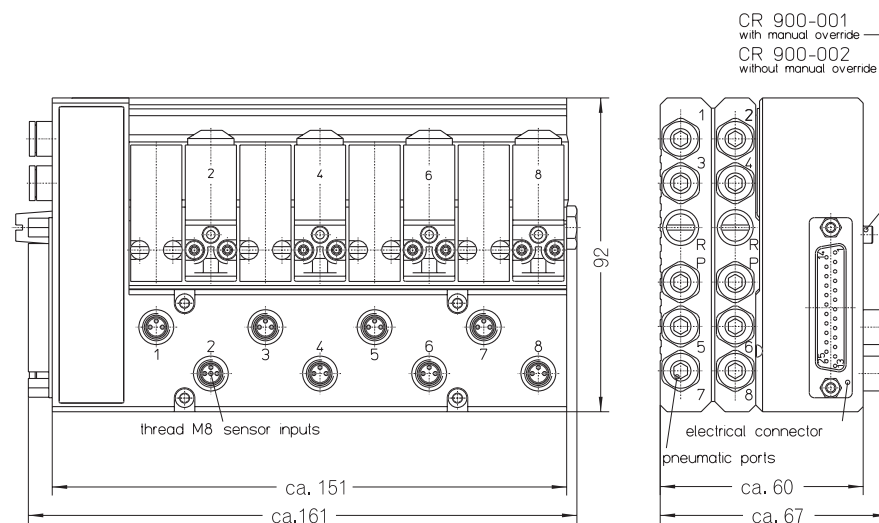
Body material: Aluminum (anodized)
 Mounting direction: free
 Power consumption: 1 W each valve
 Duty cycle: 100 %
 Degree of Protection (EN 60529): IP 54 (IP 64)

412

Other configurations upon request

The right to modification is reserved

staiger



Mounting types and accessories see page 432



Dimensions in mm

413